



**ADVENTURE TRAVEL**  
TRADE ASSOCIATION



# DISCOVER PANAMA

ATTA Destination Showcase

ATTA Webinar Series

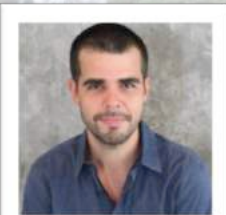




**ADVENTURE TRAVEL**  
TRADE ASSOCIATION



# TODAY'S PRESENTERS



**RICARDO SANDOVAL**  
Autoridad de Turismo de  
Panama (ATP)



**JAVIER ROMERO**  
Aventuras Panama



**ANNIE YOUNG**  
EcoCircuitos







Beautiful.



Natural.



Intriguing.



# **FAST FACTS**

- **Location**
- **Connectivity**



# **FAST FACTS**

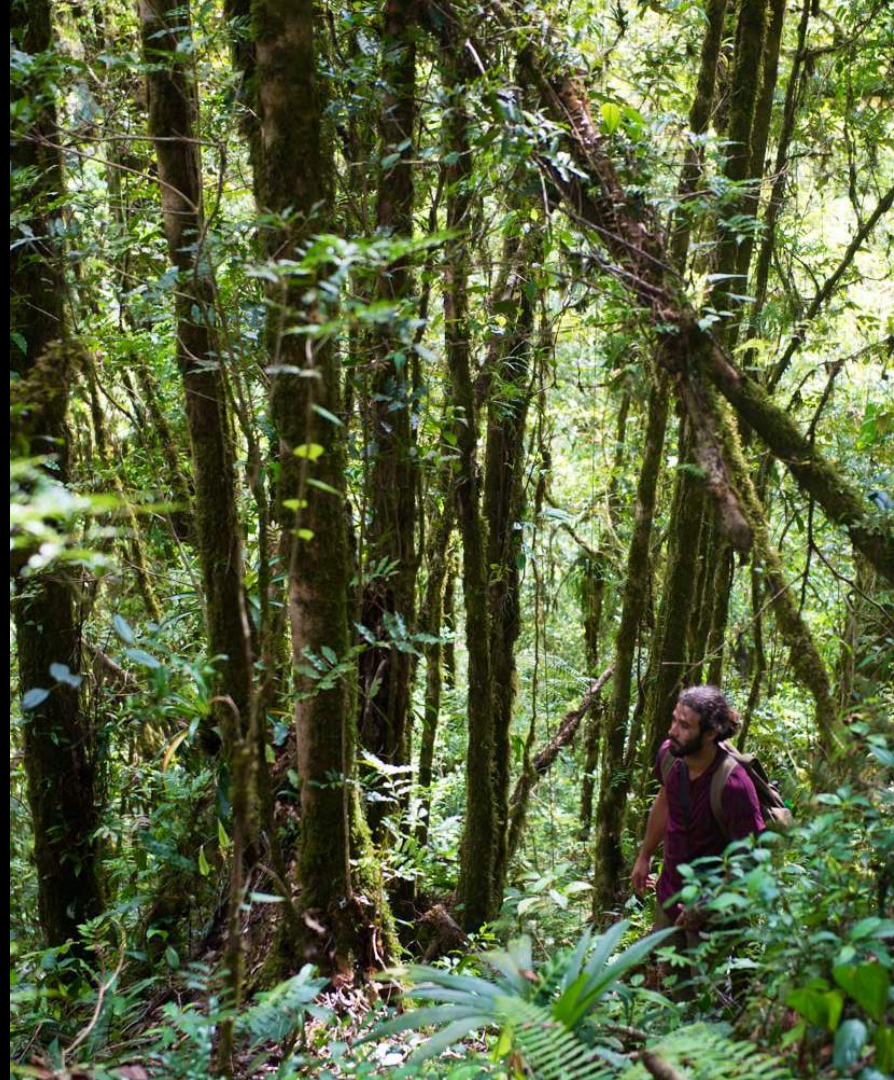
- **When to  
travel**
- **Accommodatio  
ns**





# **FAST FACTS**

- **Currency**
- **Banks**
- **Electricity**







# SUN --- CHASERS











# UNFORGETTABLE ADVENTURES

















# **ADRENALINE TO THE MAX**

















# GREEN IN MILLION OF SHADES















# CRADLE OF LIFE



















# WHERE CULTURES MEET























# DEEP --- ROOTS























# THE PANAMA CANAL





















**ADVENTURE TRAVEL**  
TRADE ASSOCIATION



Since 1994

Panama's  
first  
Adventure Tour  
Operator







**ADVENTURE TRAVEL**  
TRADE ASSOCIATION



# Sailing the isthmus of Panama through the Gatun Lake







**ADVENTURE TRAVEL**  
TRADE ASSOCIATION



# **Ships waiting turn at the Gatun Lake to pass through the Gatun Locks**







**ADVENTURE TRAVEL**  
TRADE ASSOCIATION



# The Panama Canal depends on the rain forest



**Javier Romero Gerbaud / ADVENTURES  
PANAMA**

**ATTA Webinar Series**





**ADVENTURE TRAVEL**  
TRADE ASSOCIATION



# Tropical Rain Forest

## The Chagres National Park



Javier Romero Gerbaud / ADVENTURES  
PANAMA

ATTA Webinar Series





**ADVENTURE TRAVEL**  
TRADE ASSOCIATION



# Panama City



**Javier Romero Gerbaud / ADVENTURES  
PANAMA**

**ATTA Webinar Series**





**ADVENTURE TRAVEL**  
TRADE ASSOCIATION



# Paddling along outside vessels navigation channel



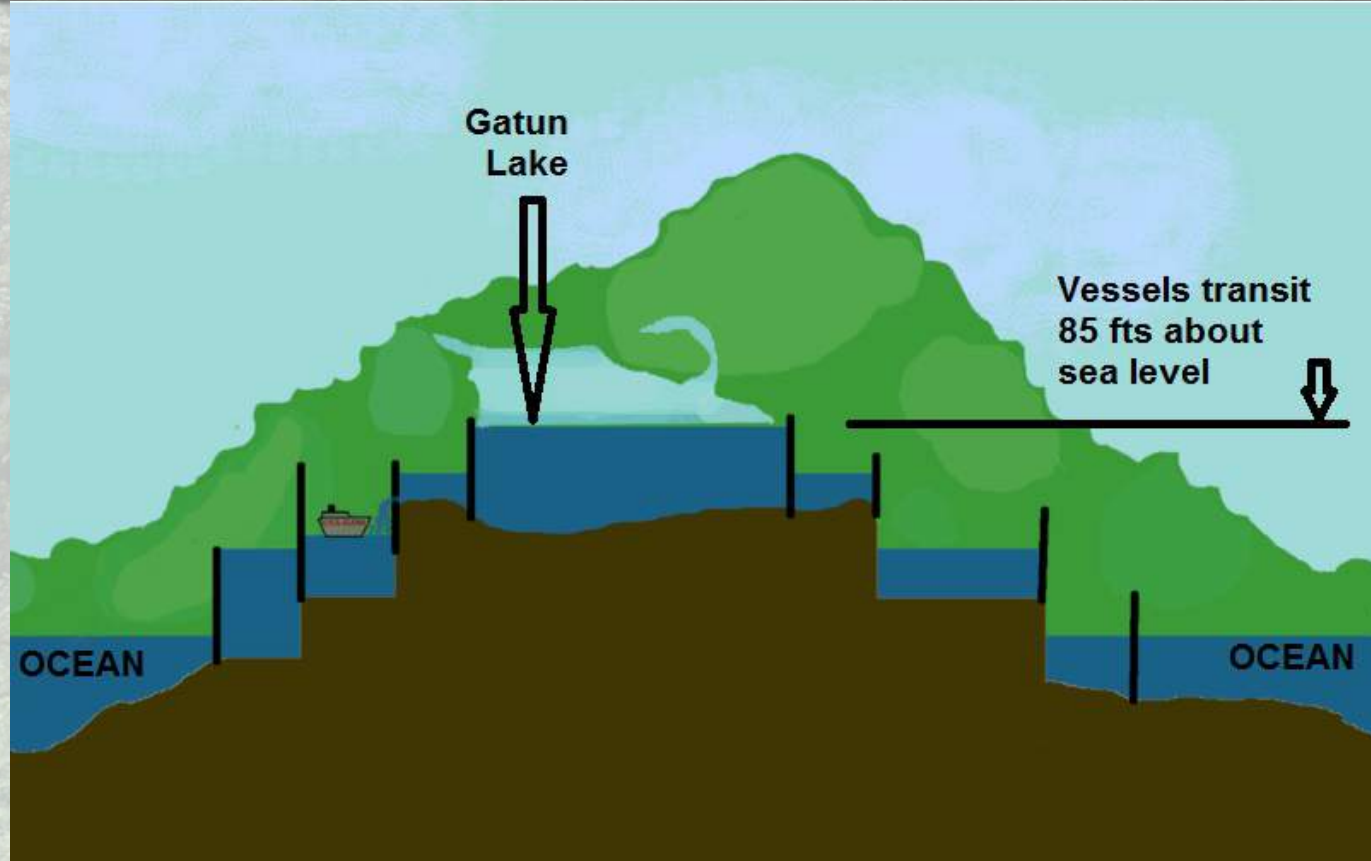
Javier Romero Gerbaud / ADVENTURES  
PANAMA

ATTA Webinar Series





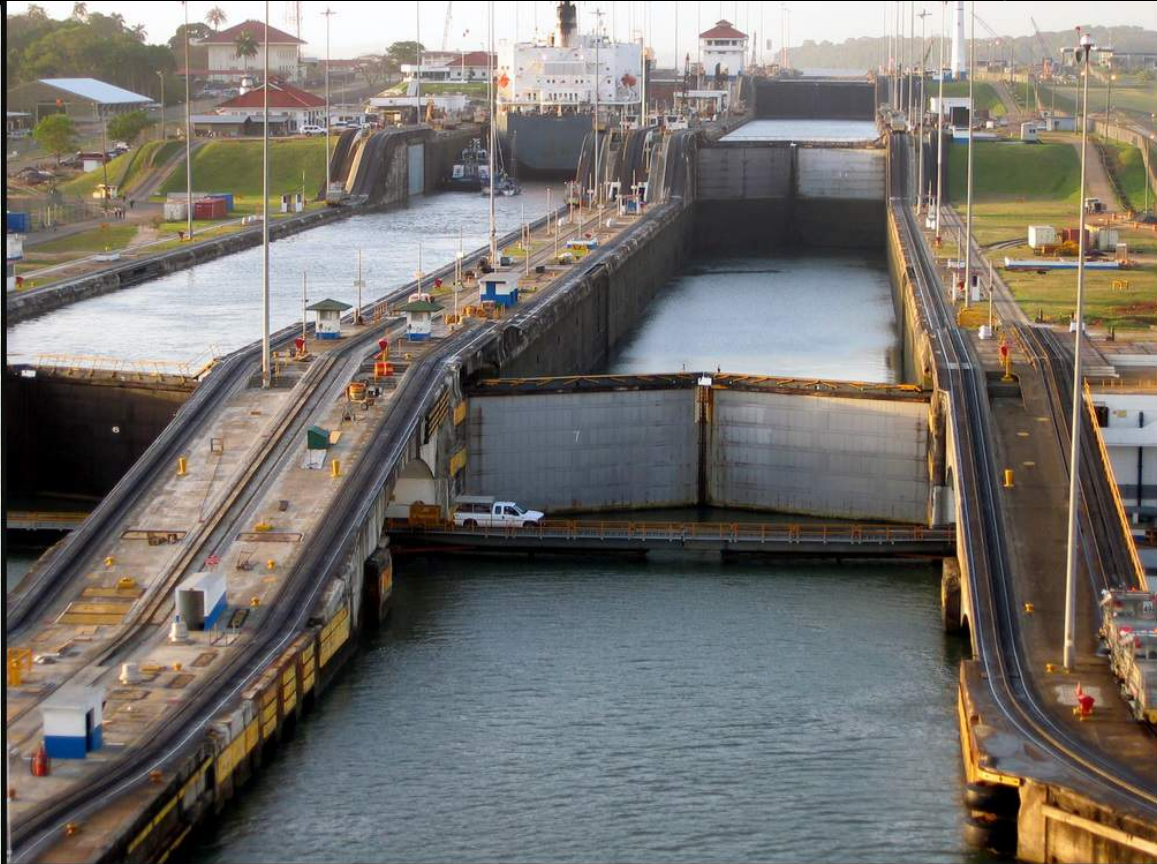
**Locks  
raise  
and  
lower  
ships**







Water fills or empties through vents along the bottom of the locks, 26 million gallons in just eight minutes







**ADVENTURE TRAVEL**  
TRADE ASSOCIATION



# The Locks

operate with  
gravity fed fresh  
water

released from  
Gatun Lake







# Facts about the Chagres River

- ☐ **Unique** The only river whose water flows simultaneously to the Pacific and the Atlantic Oceans
- ☐ **Invaluable** Without it the Canal would not work since it is its main water source. It is also the main water source of Panama City.
- ☐ **Essence of Panama** history, ethnic groups, biodiversity, and of course it is one of the world's main commercial routes since civilization settled in the continent.





**ADVENTURE TRAVEL**  
TRADE ASSOCIATION



# The Panama Canal is the Chagres River





A person in a kayak is shown from behind, paddling down a river. The river is surrounded by dense green foliage and trees. The water is slightly turbulent, creating white foam around the kayak. The overall scene is bright and natural.

# The Panama Canal

## Gatun Lake Kayaking Tour







**ADVENTURE TRAVEL**  
TRADE ASSOCIATION



# From a motorboat to expedition kayaks



Javier Romero Gerbaud / ADVENTURES  
PANAMA

ATTA Webinar Series





**ADVENTURE TRAVEL**  
TRADE ASSOCIATION



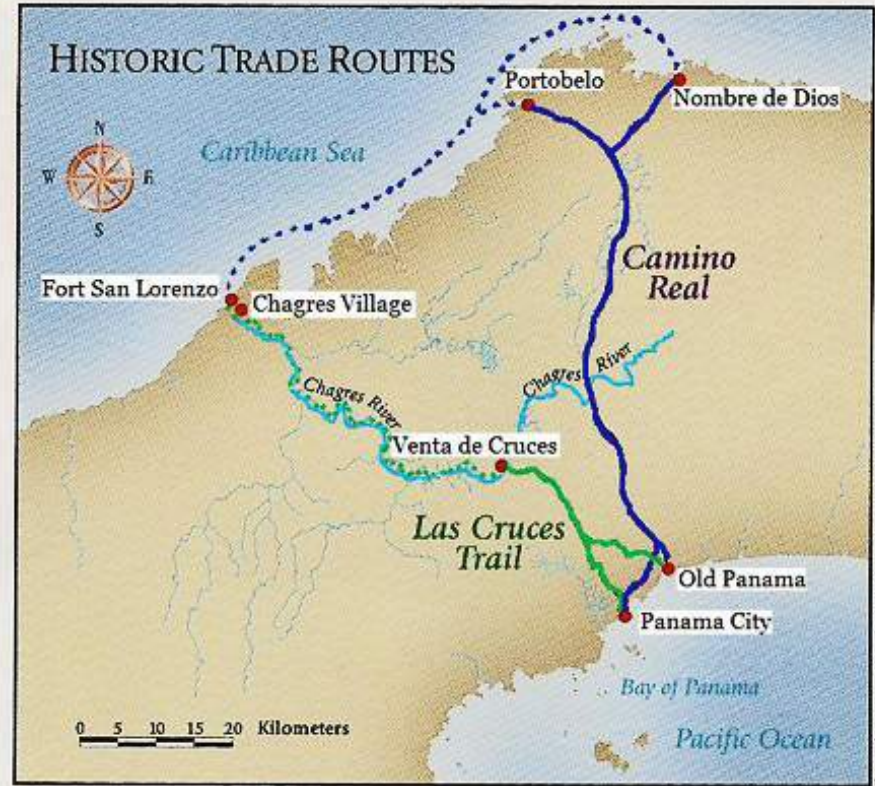
We will paddle  
in narrow  
channels that  
will allow us  
proximity to  
lake's shores







# The Chagres River becomes the Spanish Conquistadores' favorite route to cross the isthmus



Map from Centro de Estudios y Acción Social Panameno





**ADVENTURE TRAVEL**  
TRADE ASSOCIATION



# Paddling the Chagres River toward Ft San Lorenzo at the Caribbean Ocean



**Presenter Name**

**ATTA Webinar Series**





**ADVENTURE TRAVEL**  
TRADE ASSOCIATION



# Pirates looting: Spanish Conquistadores loot the New World



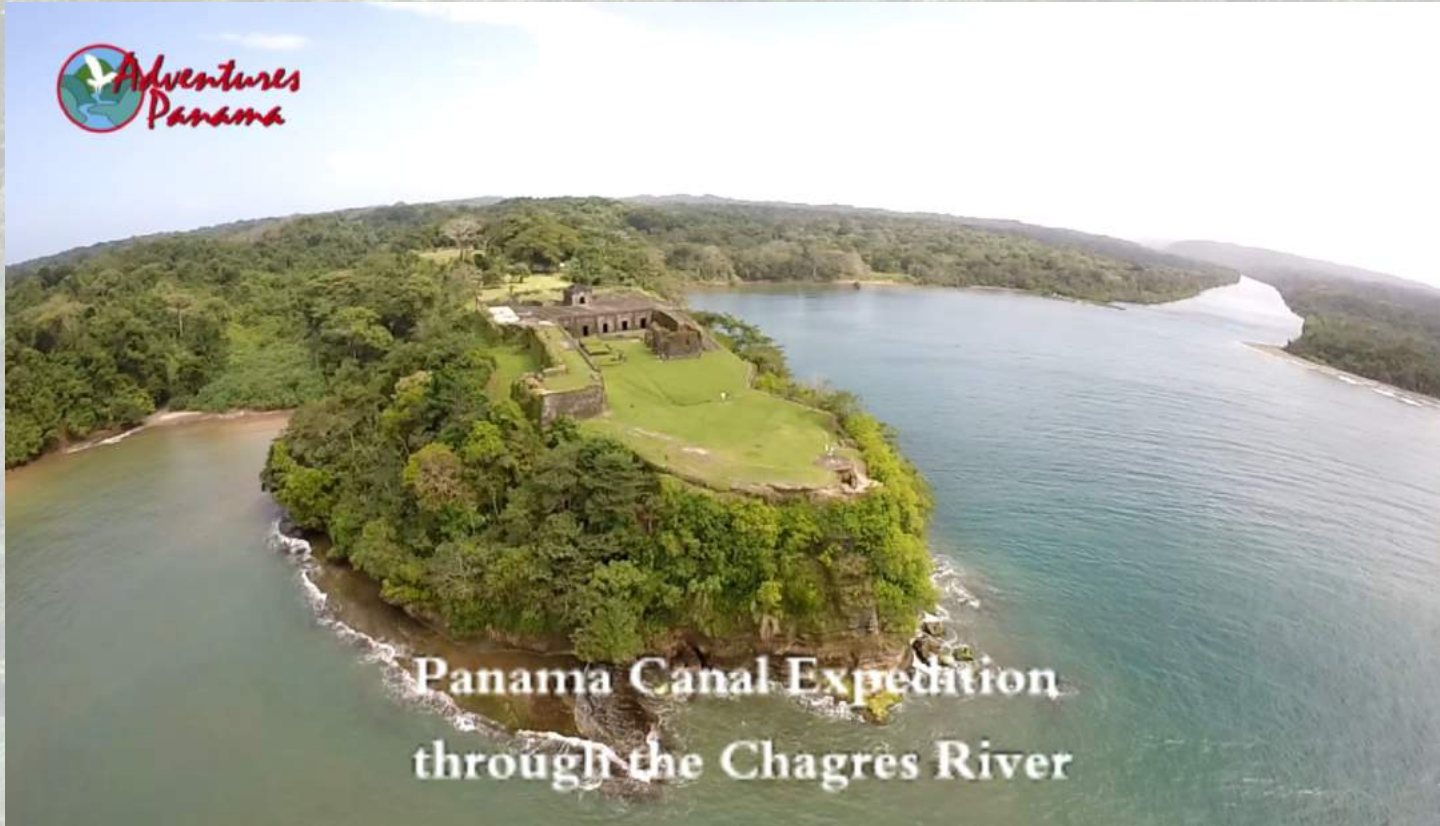




**ADVENTURE TRAVEL**  
TRADE ASSOCIATION



**San  
Lorenzo  
Fortress:  
built to  
protect  
Panama  
City from  
Pirates**



**Panama Canal Expedition  
through the Chagres River**





**ADVENTURE TRAVEL**  
TRADE ASSOCIATION



# San Lorenzo's artillery batteries seal the Chagres River in the Caribbean







**ADVENTURE TRAVEL**  
TRADE ASSOCIATION



# A bird- watchers dream



Javier Romero Gerbaud / ADVENTURES  
PANAMA

ATTA Webinar Series





**ADVENTURE TRAVEL**  
TRADE ASSOCIATION



**Javier Romero Gerbaud / ADVENTURES  
PANAMA**

**ATTA Webinar Series**





**ADVENTURE TRAVEL**  
TRADE ASSOCIATION



# Easy to spot monkeys



Javier Romero Gerbaud / ADVENTURES  
PANAMA

ATTA Webinar Series





**ADVENTURE TRAVEL**  
TRADE ASSOCIATION



# Howler Monkeys



Javier Romero Gerbaud / ADVENTURES  
PANAMA

ATTA Webinar Series





**ADVENTURE TRAVEL**  
TRADE ASSOCIATION



**Sloths,  
and  
green  
iguanas  
are also  
common**







**ADVENTURE TRAVEL**  
TRADE ASSOCIATION



# Miraflores Locks Visitor Center



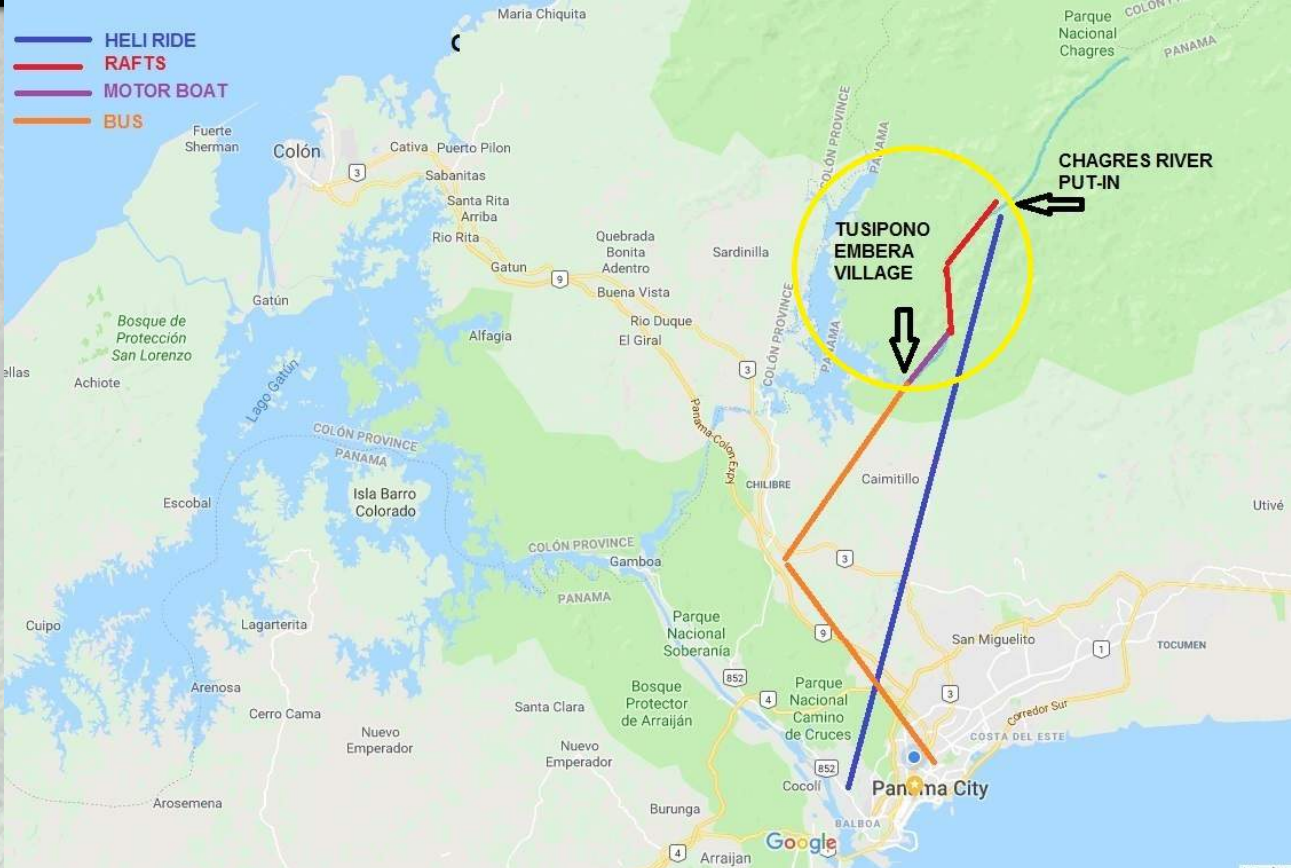
Presenter Name

ATTA Webinar Series





# The Chagres Challenge heli-ride version







**ADVENTURE TRAVEL**  
TRADE ASSOCIATION



In only 15  
minutes you  
will fly from  
Panama City  
to the middle  
of nowhere



Javier Romero Gerbaud / ADVENTURES  
PANAMA

ATTA Webinar Series





**ADVENTURE TRAVEL**  
TRADE ASSOCIATION



**Mostly  
floating.**

**The beauty  
is its jungle  
lush.**



**Javier Romero Gerbaud / ADVENTURES  
PANAMA**

**ATTA Webinar Series**





**ADVENTURE TRAVEL**  
TRADE ASSOCIATION



**Pristine jungles**

**=**

**Almost  
no erosion  
sediments**

**=**

**Often crystal,  
clear water**







**ADVENTURE TRAVEL**  
TRADE ASSOCIATION



# Rock Jumping



**Javier Romero Gerbaud / ADVENTURES  
PANAMA**

**ATTA Webinar Series**





**ADVENTURE TRAVEL**  
TRADE ASSOCIATION



**Yes,  
there is  
white water  
by  
Panama City !**



**Javier Romero Gerbaud / ADVENTURES  
PANAMA**

**ATTA Webinar Series**





**ADVENTURE TRAVEL**  
TRADE ASSOCIATION



# From rafts to motor boat canoes



**Javier Romero Gerbaud / ADVENTURES  
PANAMA**

**ATTA Webinar Series**





**ADVENTURE TRAVEL**  
TRADE ASSOCIATION



# Embera wooden motor boat canoes



Javier Romero Gerbaud / ADVENTURES  
PANAMA

ATTA Webinar Series





**ADVENTURE TRAVEL**  
TRADE ASSOCIATION



# The Embera Indigenous found Paradise in the upper Chagres River







**ADVENTURE TRAVEL**  
TRADE ASSOCIATION



# Embera handicrafts



Javier Romero Gerbaud / ADVENTURES  
PANAMA

ATTA Webinar Series





# Embera typical dances







**ADVENTURE TRAVEL**  
TRADE ASSOCIATION



**Well known for  
their river  
navigation skills**







**ADVENTURE TRAVEL**  
TRADE ASSOCIATION



**Embera tribes  
migrated about 40  
years ago  
from Darien,  
by Colombia,  
to the Chagres  
River**





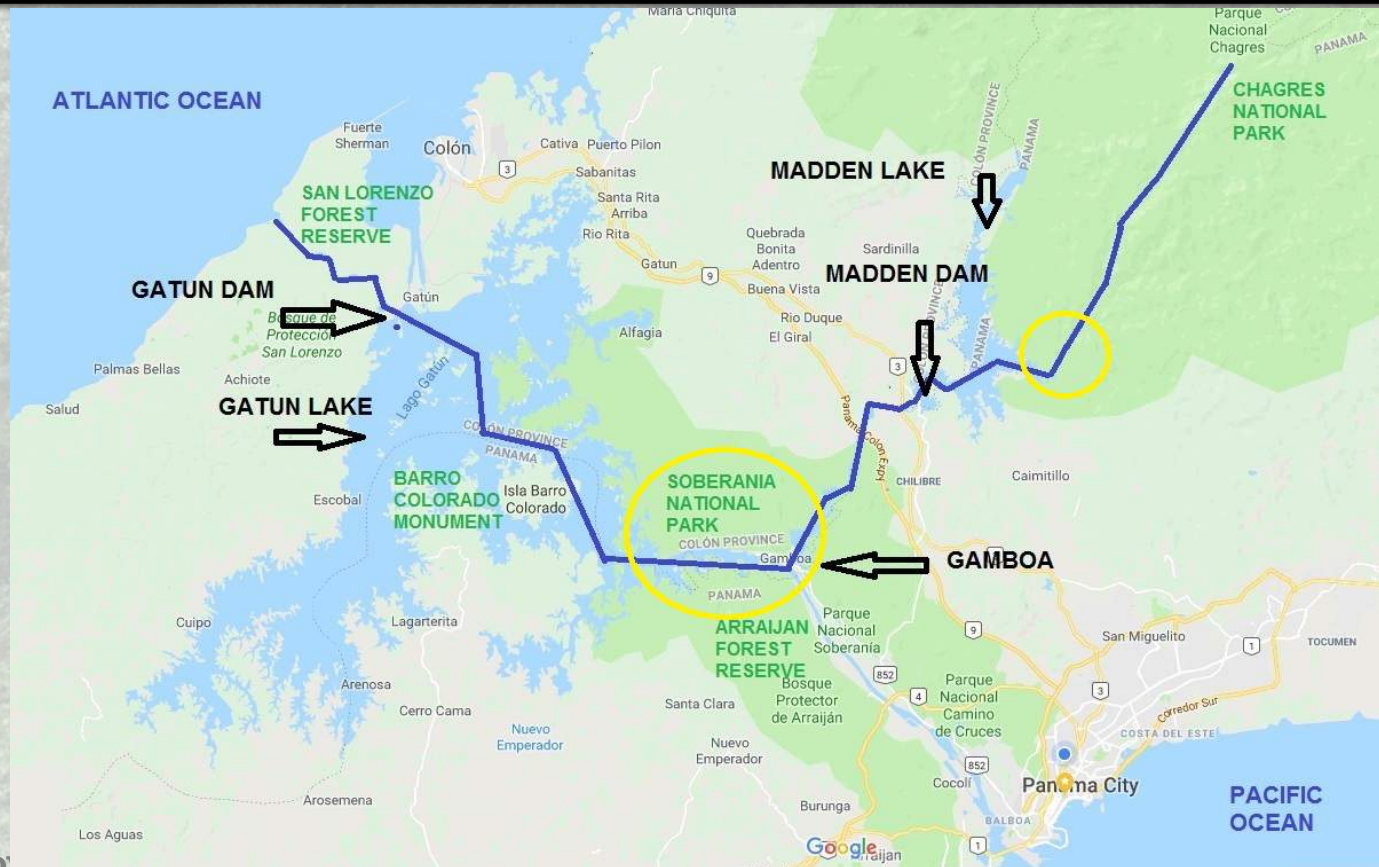


**ADVENTURE TRAVEL**  
TRADE ASSOCIATION



# The Chagres River original course

From the  
mountains to  
the ocean







**ADVENTURE TRAVEL**  
TRADE ASSOCIATION



**[www.AdventuresPanama.com](http://www.AdventuresPanama.com)**





**ADVENTURE TRAVEL**  
TRADE ASSOCIATION



## CHIRIQUI PROVINCE

*Experience Transformative Adventures*

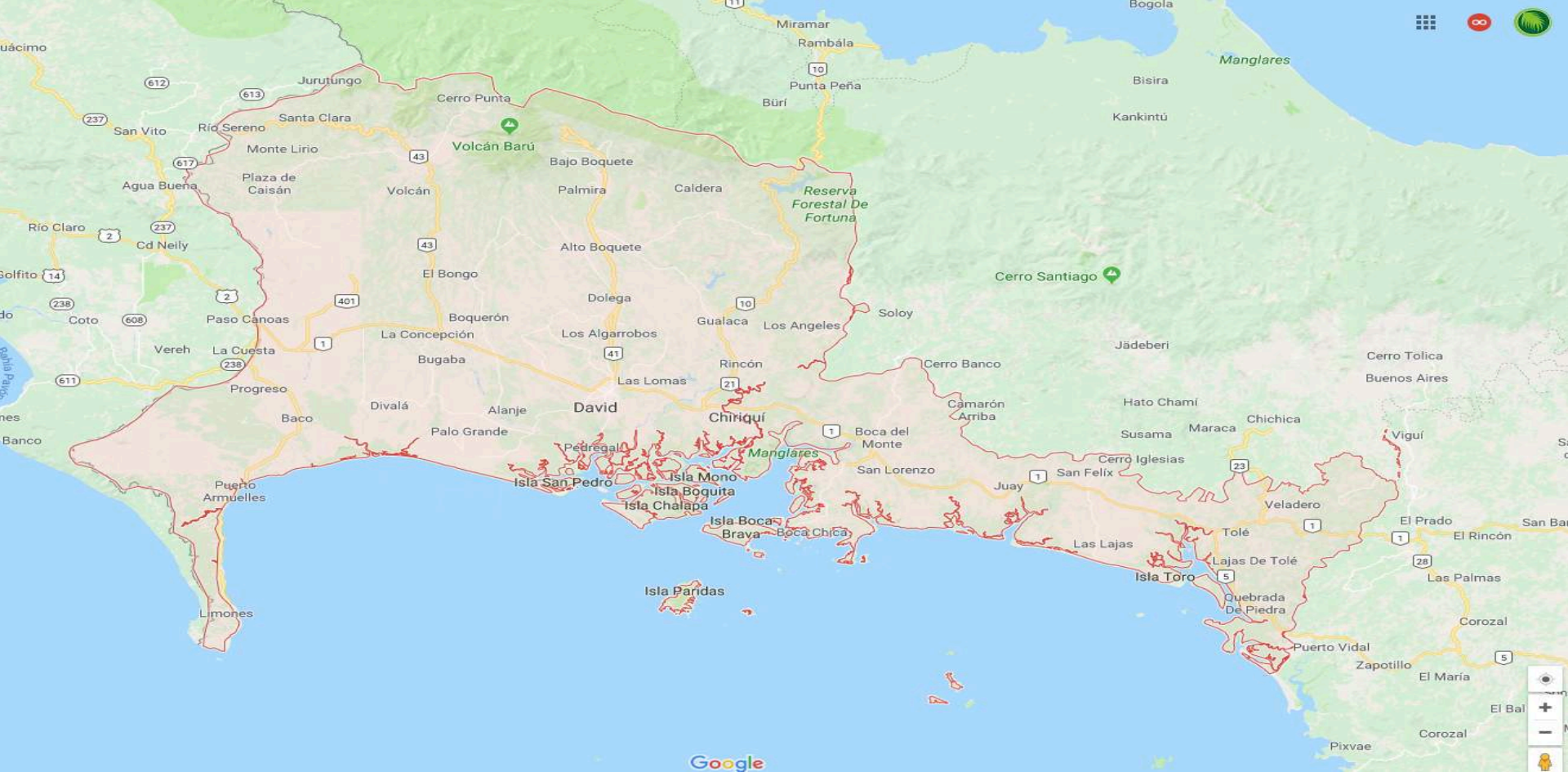




## Chiriqui Highlands: Hiking, Adventures and Wildlife.

*The Chiriqui Highlands comprise the part of the Cordillera Central that defines the northern border of the province of Chiriqui.*





# ***Chiriquí Province***





**ADVENTURE TRAVEL**  
TRADE ASSOCIATION



**45 minutes flight from Panama City**  
*From David to Boquete by van is 45 minutes*





**ADVENTURE TRAVEL**  
TRADE ASSOCIATION



## Chiriqui Highlands: Boquete Mountain Town.

The center piece is the Baru Volcano at 11,400 feet. is an inactive volcano which towers over the area with incredible views. The rich volcanic soil is amazing for agriculture and wildlife observation. Attractions include hiking, birdwatching, coffee farm tours, horse back riding, biplane canopy tour, rafting, golf and more.





**ADVENTURE TRAVEL**  
TRADE ASSOCIATION



*Amazing hiking and nature in Chiriqui Province*



*Information about Geisha Coffee in Boquete*

*Is the world's most expensive cup of coffee, from 250 bids in a 5-hour coffee auction Perry roasters from California win 11 pounds of the beans for his Klatch Coffee shop in Rancho Cucamonga. He paid \$601.00 per pound*





## Birdwatching the highlands

- In this area of 350 square miles and an altitude between 800 and 3,000 meters above the sea level, the land is extremely lush and green, and bird watching and wildlife are superior in Boquete, featuring the elusive quetzal which was considered sacred by the Mayas. Go to one of the trails around the slopes of the Baru Volcano or to a private reserve for a superb birdwatching adventure.



**ADVENTURE TRAVEL**  
TRADE ASSOCIATION



**Boquete Brewing Co.**

**A Panamanian Independent brewery in Boquete**





**ADVENTURE TRAVEL**  
TRADE ASSOCIATION



*Hotel Panamonte in Boquete: A charming Little Historic place for 1 night.*



*The Gulf of Chiriqui*



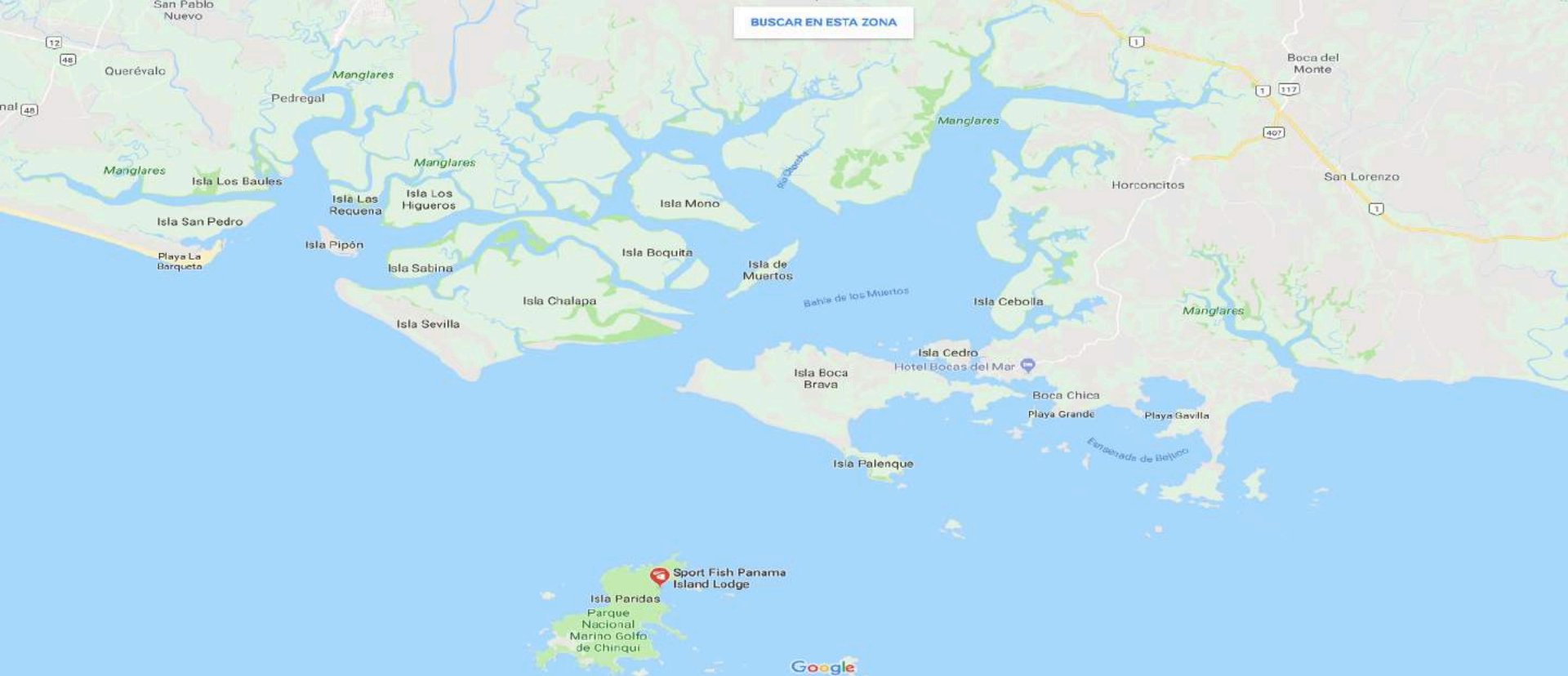




**ADVENTURE TRAVEL**  
TRADE ASSOCIATION



*Hotel Bocas del Mar: A boutique hotel for 2 nights.*



# *The Gulf of Chiriqui*





**ADVENTURE TRAVEL**  
TRADE ASSOCIATION



*Amazing Snorkeling opportunities in the Gulf*



**ADVENTURE TRAVEL**  
TRADE ASSOCIATION



**Beach combing and hiking**





**ADVENTURE TRAVEL**  
TRADE ASSOCIATION



**Isla Palenque for lunch and hiking**

*400 acres of enchanting jungle in the Gulf of Chiriqui*



**ADVENTURE TRAVEL**  
TRADE ASSOCIATION







**ADVENTURE TRAVEL**  
TRADE ASSOCIATION





**ADVENTURE TRAVEL**  
TRADE ASSOCIATION



**See you soon in Panama!**





**ADVENTURE TRAVEL**  
TRADE ASSOCIATION



# QUESTIONS?

Use the Questions  
section of GoToWebinar  
to type in your questions  
for the presenters





**ADVENTURE TRAVEL**  
TRADE ASSOCIATION



# GET IN TOUCH!

☐ **Ricardo Sandoval, ATP**

+507 6672-6705 / [rasandoval@atp.gob.pa](mailto:rasandoval@atp.gob.pa)

☐ **Javier Romero, Aventuras Panama**

+507 6679-4404 / [info@aventuraspanama.com](mailto:info@aventuraspanama.com)

☐ **Annie Young, EcoCircuitos**

+507 315-1488 / [annie@ecocircuitos.com](mailto:annie@ecocircuitos.com)

☐ **Diego Arelano, ATTA**

+1 360-805-3131 / [diego@adventuretravel.biz](mailto:diego@adventuretravel.biz)





**ADVENTURE TRAVEL**  
TRADE ASSOCIATION



# ADVENTUREWEEK **PANAMA**

May 27-June 3, 2018

[www.adventuretravel.biz/events/adventureweek/panama-2018](http://www.adventuretravel.biz/events/adventureweek/panama-2018)





**ADVENTURE TRAVEL**  
TRADE ASSOCIATION



# DISCOVER PANAMA

ATTA Destination Showcase

ATTA Webinar Series